



Alcatel-Lucent OmniAccess Stellar Hotspot Tracking and Contact Tracing

The global pandemic has impacted nations, communities and businesses around the world in a variety of ways. It has affected millions of lives and has sent the economies of many countries into a downward spiral. As the spread of the virus begins to decrease and businesses slowly resume operations, it is imperative that regulations defined by local health authorities are followed, to reduce the risk of further spread among employees, customers and local communities. We must all work together in this new normal - vendors, partners, employees and customers - while leveraging technology that can help prevent the spread.

While priorities may have shifted, it is crucial to ensure employees and business customers be kept safe. Following local health authority regulations is a good start, but you also need to have tools to identify how employees and customers interact in real-time, along with the ability to capture historical contact flow for analysis if required.

Businesses need to manage the number of people in a specific area and enforce social distancing by providing real-time density monitoring. Businesses also need a hotspot tracking and contact tracing solution that can:

- Define an area to be monitored
- Identify the number of people in that area
- Enable notifications to relevant personnel based on specified criteria (for example; people moving beyond a boundary, or number of people entering or leaving an area)
- Use analytics to trace historical contact flow where necessary

With these capabilities businesses can:

- Implement a turnkey, cost-effective track and trace solution
- Rehire personnel, restart their business and generate income
- Keep employees and customers safe and inspire confidence when returning to work
- Comply with the law to avoid closure
- Provide anonymous tracking where needed to comply with health authorities

Alcatel-Lucent OmniAccess® Stellar Hotspot Tracking and Contact Tracing

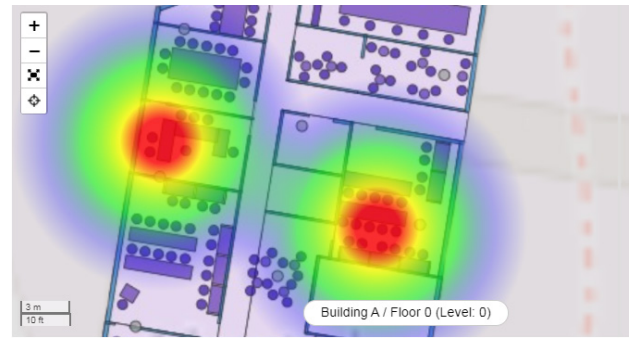
OmniAccess Stellar Hotspot Tracking and Contact Tracing is based on the [OmniAccess Stellar Asset Tracking](#) solution and enables businesses to re-open while keeping employees and customers safe. In addition to social distancing, wearing face coverings, regular hand hygiene and other recommended sanitary practices, OmniAccess Stellar Hotspot Tracking and Contact Tracing provides real-time capabilities and historical analytics.

Hotspot tracking enables businesses to:

- Set up virtual boundaries to represent hotspot areas to be monitored
- See people in hotspot areas in real-time
- See people in specific areas and for how long (provide historical data)
- Identify proximity in real-time
- Select people from a list to see if there is prolonged contact (includes historical time stamps)

Contact tracing provides visibility to:

- Track people while in defined areas (real-time and historical)
- Identify how long people are in specific areas on a floor plan map in real-time
- Identify how long people are in specific areas based on analytics (provide historical data)
- Use geonotifications to identify how many people enter or exit areas (real-time and historical data)
- See people in close proximity to each other (real-time and historical data)



- See which people were in specific areas during various time periods (historical data)
- Assign wearable tags to people such as hospital patients and visitors, airport/train station travelers, restaurant patrons, hotel guests, public site visitors/tourists, and university students
- Reassign tags for repeat usage

Solution components

OmniAccess Stellar Hotspot Tracking and Contact Tracing uses the same technology and components as the OmniAccess Stellar Asset Tracking solution. It can be implemented as an overlay to an existing WLAN infrastructure or it can leverage an [Alcatel-Lucent OmniAccess Stellar WLAN](#) infrastructure. A stable Wi-Fi network and Internet connection is required to add a track and trace solution to your business. Components for this turnkey solution include:

- **Asset tags:** Bluetooth Low-Energy (BLE) for proximity detection and low battery consumption
- **BLE gateways:** Provide the ability to identify the BLE tags and forward location metrics from the Wi-Fi infrastructure to the cloud-based Alcatel-Lucent OmniVista® Cirrus Asset Manager for location calculation
- **Smartphone and web app:** Provisioning, notifications, search and floor plan maps
- **OmniVista Cirrus Asset Manager:** Cloud-based real-time location, statistics and analytics, and management engine